

MONTHLY MEMBERSHIP PROGRESS REPORT

LOCATION INDIA

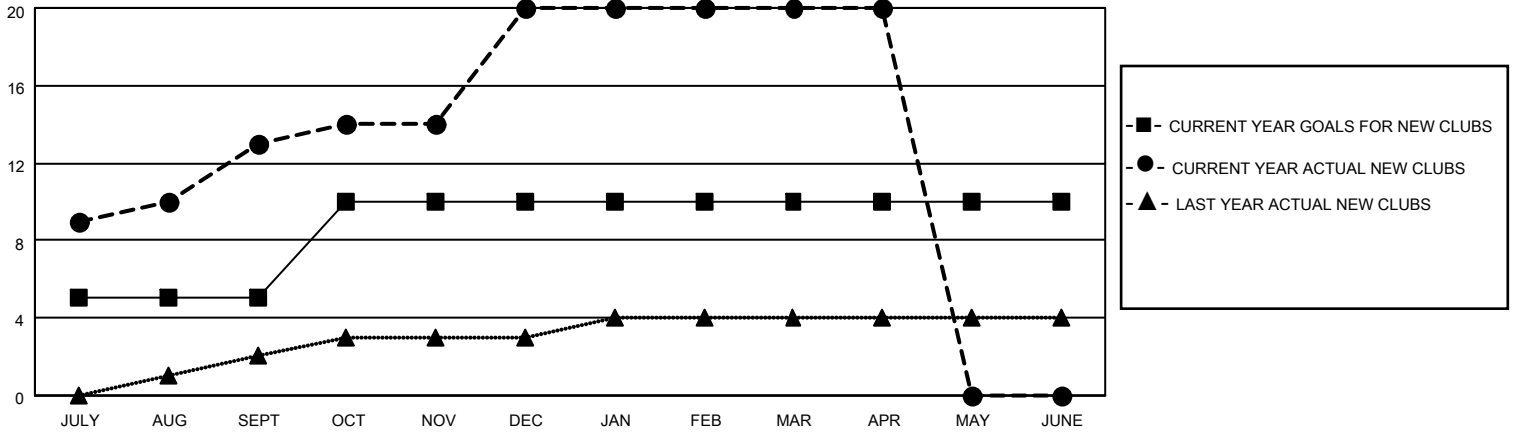
District 321 D

Results as of: 4/30/2021

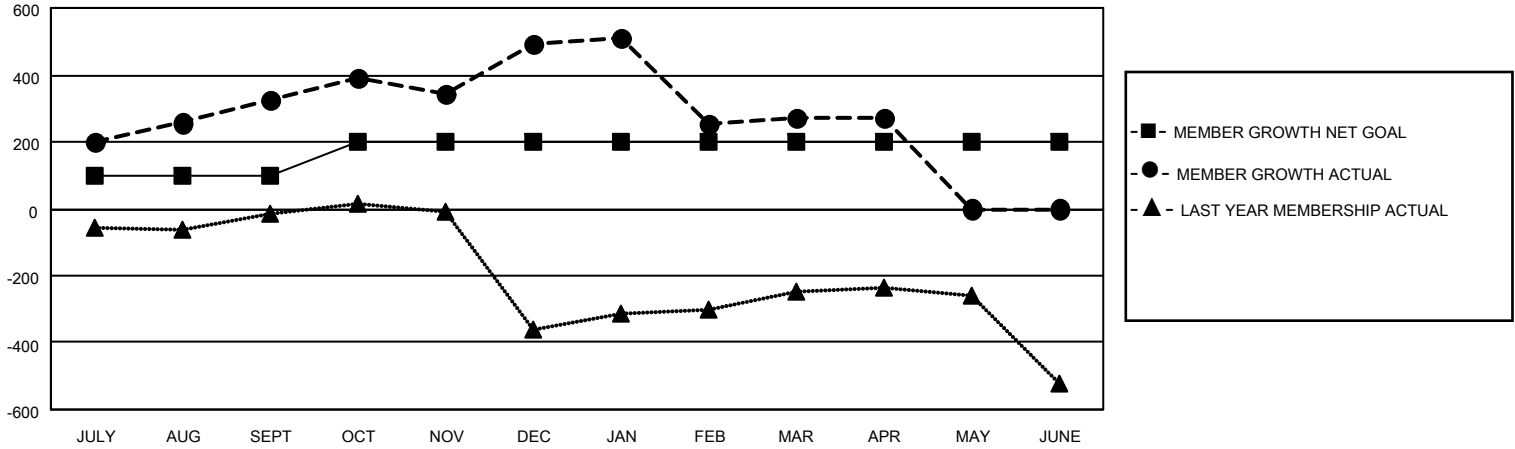
Clubs			
RESULTS FOR 2020-2021			
QUARTER	NEW CLUB GOAL	NEW CLUBS	DROPPED CLUBS
JULY/AUG/SEPT	5	13	0
OCT/NOV/DEC	5	7	0
JAN/FEB/MAR	0	0	12
APR/MAY/JUNE	0	0	0

Members			
RESULTS FOR 2020-2021			
QUARTER	MEMBER GROWTH NET GOAL	MEMBER GROWTH ACTUAL	DROPPED MEMBERS ACTUAL (including transfers)
JULY/AUG/SEPT	100	451	108
OCT/NOV/DEC	100	418	242
JAN/FEB/MAR	0	96	290
APR/MAY/JUNE	0	18	15

GOALS AND ACTUAL NEW CLUBS CUMULATIVE



GOALS AND ACTUAL MEMBERS CUMULATIVE



DROPPED CLUBS: 12

80 CLUBS OF 146 ADDED 1 OR MORE NEW MEMBERS

GENDER DISTRIBUTION

MALE 3,029 (72.97%)
 FEMALE 1,122 (27.03%)

DROPPED MEMBERS

DECEASED	17
CLUB CANCELLED	258
OTHER	380
TOTAL	655

[CLICK HERE FOR CUMULATIVE MEMBERSHIP DATA](#)

TOTAL FAMILY UNIT MEMBERS	2,314
FAMILY MEMBERS PAYING HALF DUES	1,361